

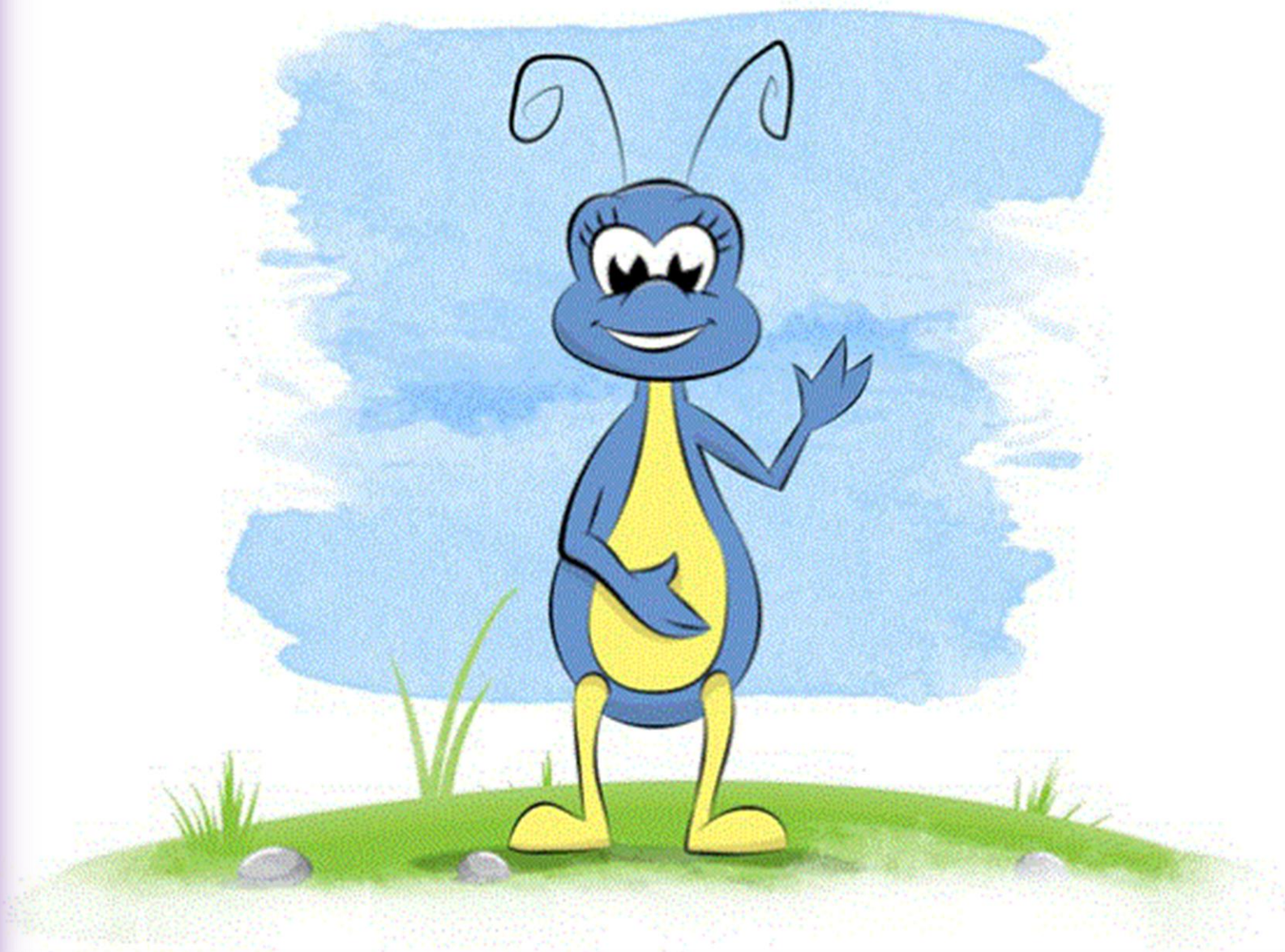
Cultural Challenges In Developing An Assessment For Indian Children During A Pandemic


Dr Chris Jellis

CEM - Cambridge University Press & Assessment

BASE







Previous Item

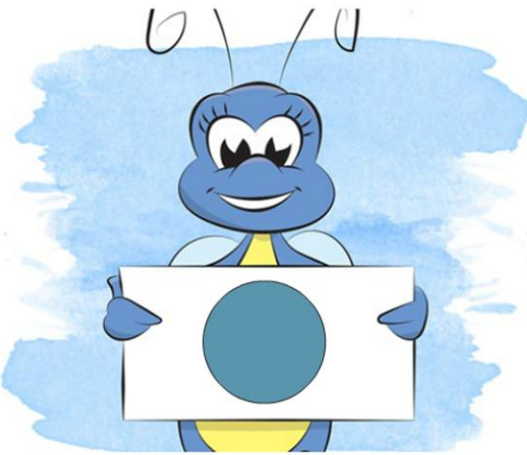
Replay Audio

Y

N

What letter is this?

Quit




Previous Item

Replay Audio

Y

N



Can you point to another card with the same shape?

Quit



Previous Item

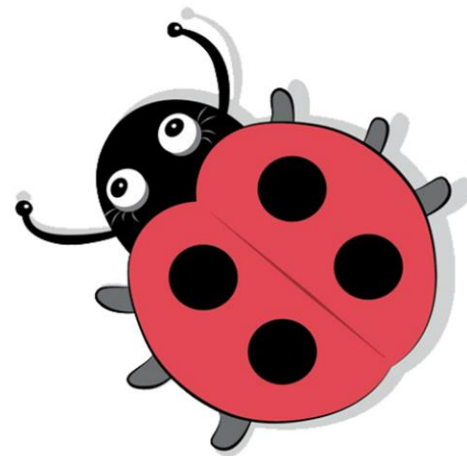
Replay Audio

Y

N

Can you tell them what number it is?

Quit



Previous Item

Replay Audio

Y

N

Look at this bug. How many spots are on its back?

Quit









them

Replay Audio

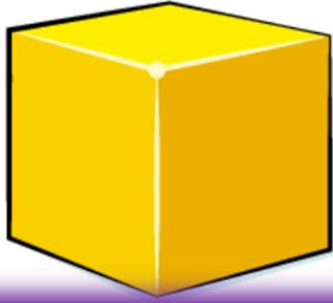
Y

N

id:108

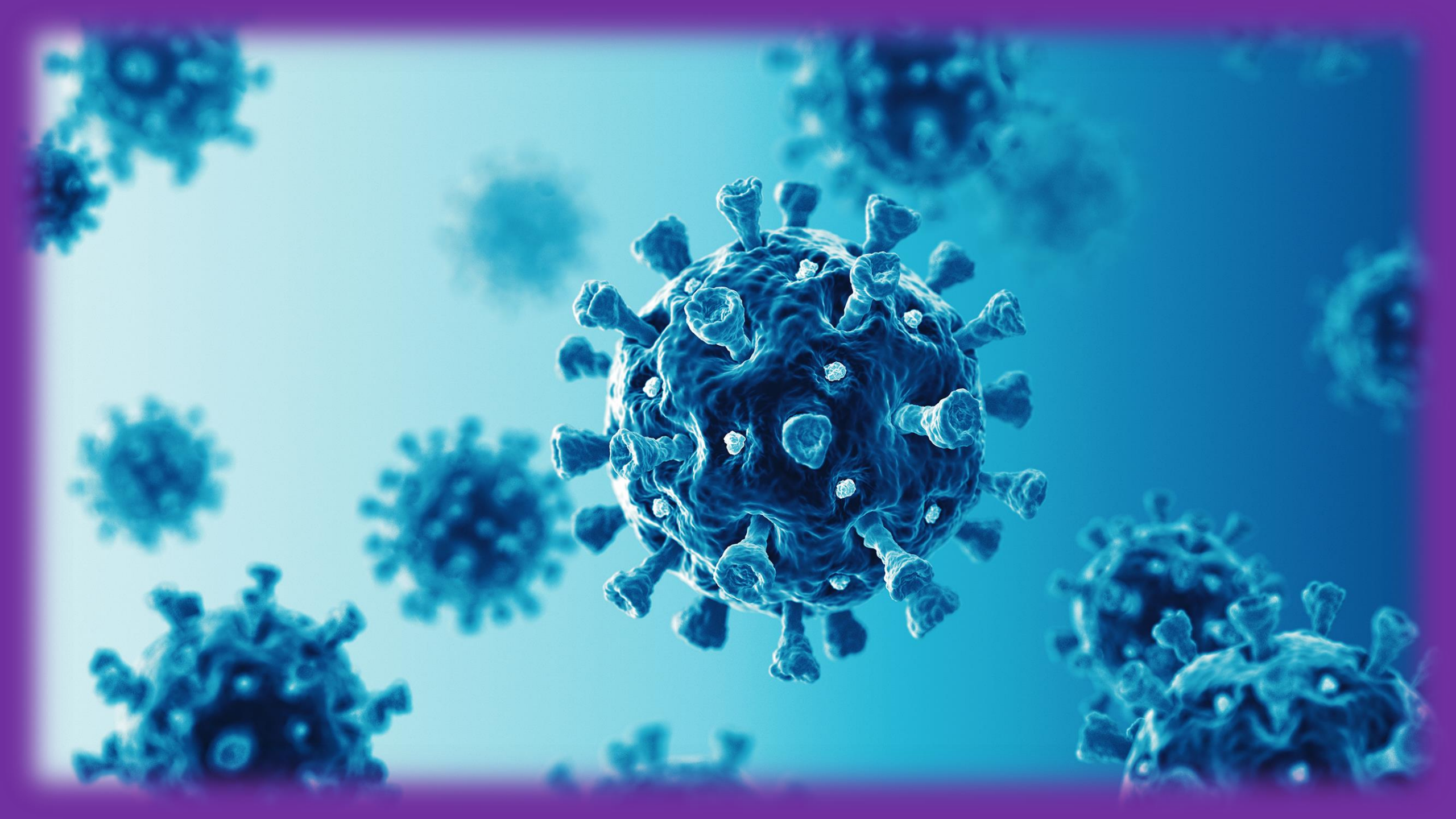
Can you help me to read these words?

Save & Exit




The Big Tree 1

I live in an nest on a branch of the tree. Yesterday I lay three eggs. In a weeks three baby birds













The Psychometrics Centre University of Cambridge



CONCERTO
OPEN-SOURCE ONLINE ADAPTIVE TESTING PLATFORM

[About](#) [Features](#) [Services](#) [Contact](#)

THE OPEN-SOURCE ONLINE
ADAPTIVE TESTING PLATFORM

Use Concerto



Comments from EYI survey

- ‘The picture-based questions had pictures that were similar to the events happening around. The dress worn by people in the pictures , their hair colour, the activities that they did like flying kites were also very Indian.’
- ‘Picture based questions were culturally appropriate like kite, lorry etc. Names of the characters were appropriate.’



Cambridge Early Years Check Together

Click or tap the "Next" button to begin.

Next →

Thank you for listening!
Any questions?



CAMBRIDGE
UNIVERSITY PRESS & ASSESSMENT



CEM
Centre for Evaluation & Monitoring

Chris.Jellis@cambridge.org